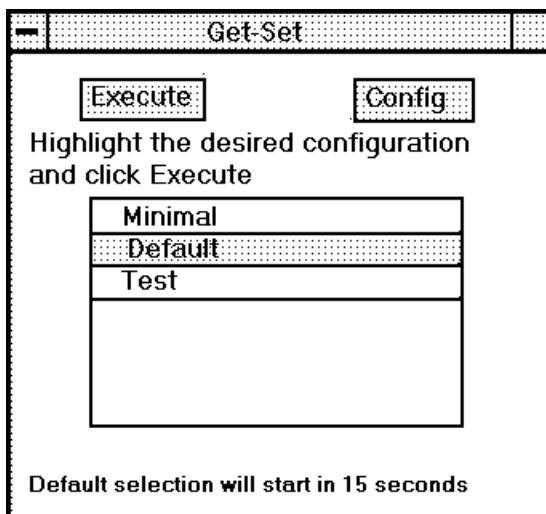


Get-Set_(c)

If you are like me, you probably have a standard set of programs you start (in the 3.1 Startup Group or in Win.Ini on the load= or run= lines) each time you boot Windows. Sometimes, such as when you install new software, you need to have nothing running, so you must close all those open applications. Or perhaps, different times you boot your computer, you need to work on totally different projects, say software development, or data analysis. Wouldn't it be nice when you start windows to be able to select different configurations of apps that are to be run (or loaded)?

Introducing Get-Set, a simple utility program that allows you to select one of several configurations to be executed at the start of Windows. Get-Set supports multiple, user configurable, configurations. It has an automatic startup feature that will automatically boot a selected default configuration after a time limit has elapsed.

After it has been installed, when you boot Windows, Get-Set will run and you will see the following:



If you do nothing, the default configuration will start in 15 seconds. If you highlight another configuration and click Execute, then that configuration will be executed.

You can create many different configurations. Each one contains a list of programs to be run or loaded.

Installation

Installation is easy. Simply copy GETSET.EXE and GETSET.INI to your \ Windows directory. This is a Visual Basic 2.0 program so if you don't already have it, copy VBRUN200.DLL to \Windows\System. Edit your WIN.INI and change the line that says "run=" to "run=getset.exe". There should be no other programs listed on that line. Also remove any programs listed on the line that says "load=". If you are using Windows 3.1 you should also check the Program Manager Startup Group. There should be no applications started in the Startup Group. You must put Get-Set in the Startup Group **-or-** have it in the "run=" line in Win.Ini **NOT BOTH.**

To customize your configuration file, run GetSet.exe and immediately click on the Configure button. You will be shown a configuration screen. Use the Menu selections to Add or Delete setups. For each setup, you can add or delete programs.

Only one setup may be declared the Default. This is the one that is automatically executed when Get-Set is run and the 15 second timeout is allowed to occur. The last setup that you check the "Default" box for, is the one that becomes the Default. You are not required to have a Default setup, in this case, Get-Set will wait for you to select a setup and click on Execute.

When you are done, close the configuration screen, the Main screen will show the names of the setups you have configured. You may click on one to highlight it and click on the Execute button to activate those applications. If any errors occur (such as not being able to locate an application) they will be logged in the file GETSET.LOG (in the directory where GETSET.EXE is).

Whats new in release 1.1

There are several minor changes to this release:

1. You can have up to 10 setups, each with 20 programs.
2. After each program is Spawned, there is a 1.5 second delay so that everything doesn't start at once.
3. The configuration screen will now search your path for an EXE if you do not supply the directory.

Finally

There is no charge for this initial release, but ownership and copyright

remain with SET Inc.

I would also appreciate your help in finding and killing the bugs that may be lurking in Get-Set. If you have questions, comments, bug reports, praise, criticisms and suggestions or anything else on your mind, you can reach me at the following locations.

Compuserve: 70402,2714
Internet: rubin@procon.jhuapl.com
FAX (301)588-0154

I use Get-Set to make my life easier, I hope you will find it useful as well.

Don Rubin
SET Inc.
9703 Forest Glen Court
Silver Spring, MD 20910-1121

Legal Notice: Get-Set (c) 1992,1993 SET Inc.